

Only IPCL offer this...

Smart toric

Cylinder range: 0.5 to 10 D. The axis position is always individually designed

- IPCL is always positioned 0–180°
- No rotation is required

The **central opening** is conical on all IPCL Myopic models: (Hyperopic up to +3.5 D SE) the diameter on the posterior surface is larger than on the anterior surface. This reduces light reflections and optimises the aqueous humor flow.

Diffraction-refractive trifocal optic

Choice of near vision additions +1.5 D to +3.5 D in 0.5 D steps

Diopter range

+15.0 D



-30.0 D

Cylinder: 0.5 to 10 D

An extensive range of sizes:

11.00mm	12.75mm
11.25mm	13.00mm
11.50mm	13.25mm
11.75mm	13.50mm
12.00mm	13.75mm
12.25mm	14.00mm
12.50mm	

Individually **adjustable optic diameters** between 6.6 and 7.25mm

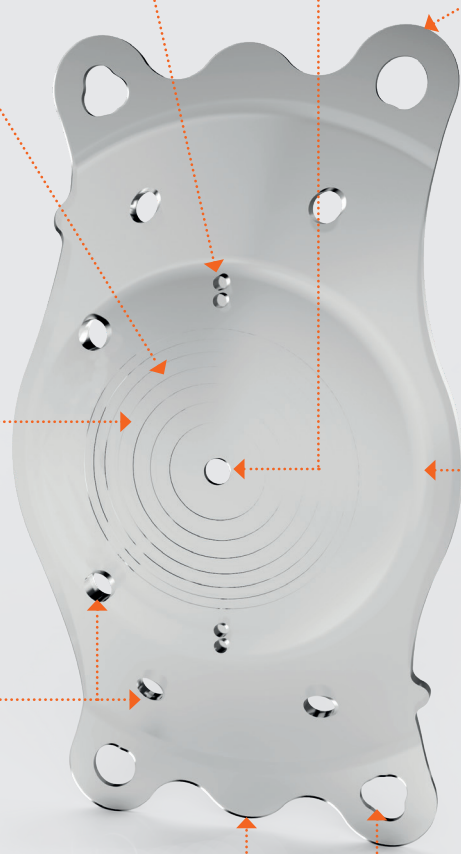
Openings at the upper optic rim and the haptic base for even better aqueous humor flow

Back up lens
Always provided for you!

Six Haptics provide rotational stability

Easy loading,
implantable through 2.8mm

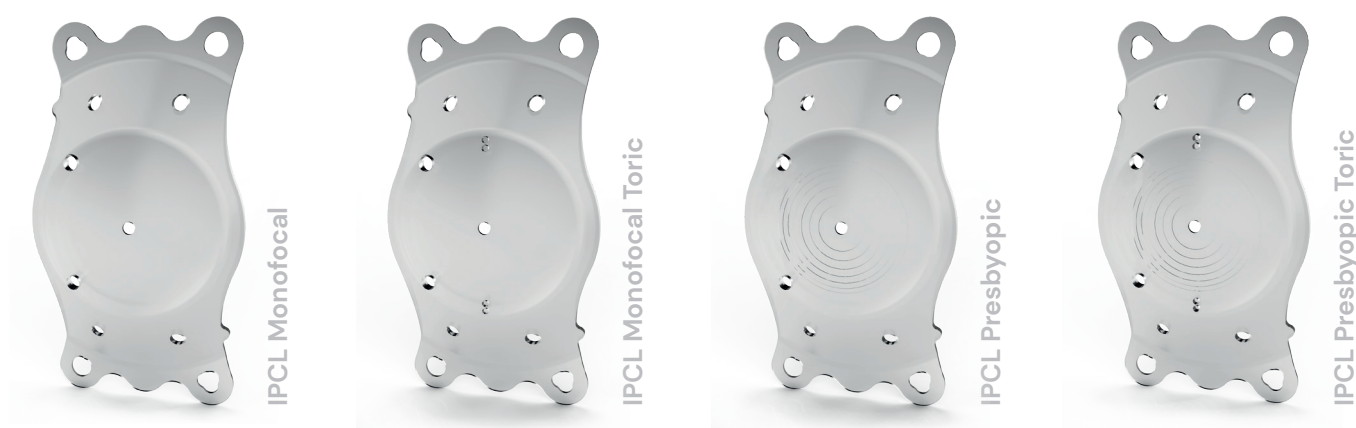
Specially **engineered spring haptics** provide flexibility and reduce vaulting in case of excessive tension in the sulcus.



IPCL: The One Step Refractive Solution

Precise. Safe. Reversible.

TECHNICAL SPECIFICATIONS OF THE IPCL FAMILY



Hyperopic models above 3.5 D do not have a central hole

Dioptric range sphere	-30.0 D to +15.0 D (in 0.5 D increments)
Dioptric range cylinder	+0.5 D to +10 D (in 0.5 D increments)
Dioptric range near addition	+1.0 D to +3.5 D (in 0.5 D increments)
Overall diameter	11.00 to 14.00mm, in 0.5mm increments
Optic diameter	Standard optic: diameter 6.6mm Individual optic: selectable diameters up to 7.25mm
Optical zone	Standard optic: 5.80mm (effective*: approx. 7.3mm) Individual optic: up to 6.40mm (effective*: approx. 8.0mm)
Incision size	2.8mm
Material	Hydrophilic hybrid acrylate
UV filter	420nm
Refractive Index	1.465
Abbe number	60
Distance optic / haptic level	1.20 to 1.70mm

**taking into account the corneal enlargement*