



IPCL Presbyopic: The fast and safe way to achieve freedom from reading glasses

After approximately 40 years of age, many people find their near vision starts to deteriorate.

You might recognise some of these signs:

- You often ask your other half, or children to read the menu
- Your arms suddenly no longer stretch enough to read the text on your phone or book
- You make the mistake of ordering a very expensive glass of wine!
- You struggle to see the display on gym equipment
- You are no longer able to read labels or ingredient lists easily

Why does this happen?

It's called Presbyopia. Don't worry you're not alone, it affects 2 billion people worldwide!

What is Presbyopia?

It's is an unavoidable and often annoying part of ageing: the ageing of your natural lens. Your eyes gradually lose their ability to focus on near objects.

Symptoms typically begin to appear in your early to mid-40s and can continue to worsen into your 60s.

We can hide most signs of ageing like grey hairs and ageing skin. But what about our eyes? Not everyone wants to wear reading glasses... due to inconvenience, appearance, occupational or lifestyle reasons...

There is another solution...

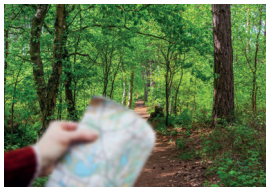


It's a fast and safe treatment which provides freedom from reading glasses:

→ IPCL Presbyopia (Implantable Phakic Contact Lens)

IPCL lenses have an aspheric optic providing the best image quality, contrast sensitivity and visual acuity outcome. IPCL can correct...

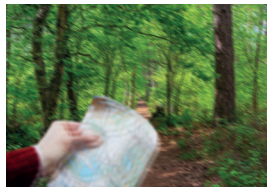
→ Hyperopia



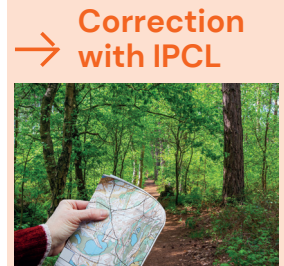
→ Myopia



→ Astigmatism



→ Presbyopia



IPCLs are **clear implantable customised lenses** that are placed between your iris (the coloured part of your eye) and your natural crystalline lens.

IPCLs function like typical contact lenses to correct your vision (but don't require any maintenance). The difference is that IPCLs work from inside your eye instead of sitting on the surface, making them invisible to others.

The IPCL Presbyopic will provide you with far, intermediate and near vision without the need for glasses. Astigmatism can also be corrected with this highly customised option!

The IPCL Presbyopic optic is bespoke to you, taking into consideration your visual needs now and in the future.

